



Friends of Salt Springs Park September 2020

www.friendsofsaltspringspark.org

570-967-7275



Columbus Day Weekend

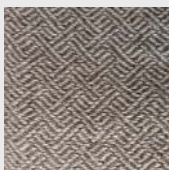
For the past several years, as participants in the Artists' Open House Weekend, the Friends have hosted artists at Salt Springs over Columbus Day weekend and held a Soup Sale on Saturday. With covid-19 still a reality, things are, not surprisingly, going to be a bit different this year.

The art tour will be virtual (please enjoy it at artiststour.com) and we won't be selling soup, but we will hold a modest outdoor fundraiser featuring free music, several food and merchandise vendors, a pie sale, and a raffle. We'll have our new long-sleeved T-shirts, sweatshirts, and wool blankets for sale, too. Stock up on them for your holiday giving this year while we still have the colors and sizes you want! Mark it on your calendar for **Saturday, October 10, from 11 a.m. until 4 p.m.**

While Supplies Last . . .

Available by appointment (570-967-7275) or from our outdoor table on Saturday afternoon, October 10.

100% Shetland wool blankets, \$100 each, in three patterns (Labyrinth, Garden, and Flags, respectively):



New!



Dress up your car with one of these FSSP custom front license plates.

We have only 8, and they are \$15 each.

Joint Study with Cornell University

Join us Saturday, October 10, 10 a.m., to learn about a new study just underway at Salt Springs to monitor deer browse in the park.

Deer browse is moderately to severely negatively affecting several habits in the park. With the fencing in of two study plots this week, the Friends are taking the first step of studying the impacts of deer browse with the hope of implementing a plan to slow it down and protect the park's biodiversity.

Kristi Sullivan, Wildlife Biologist at Cornell University, will discuss the effects deer are having on Pennsylvania's woodlands and the signs that are used to determine the degree to which deer might be affecting a particular forest. She will describe AVID, a citizen science method to Assess Vegetation Impacts from Deer (aviddeer.com), and how it will be used at Salt Springs.

Meet in the Friends Parking Lot on Buckley Road. After a presentation, we'll walk to an affected site via Cliff and Bunny Trails.



The photo shows a browse line, perhaps the most well-known sign that deer are having a high impact in the immediate vicinity; the line is at 5-6 feet, with no vegetation below it because deer have eaten everything within their reach.

Upcoming Programs

[Full Details on Our Website](#)

NOTE: Programs are adapted to comply with current pandemic health and safety guidance from the Dept. of Conservation and Natural Resources and the PA Dept. of Health and Human Services. At a minimum, we require participants to practice social distancing and to be respectful of other participants' personal space and comfort. Please bring a mask with you in case a situation arises where guidelines advise its use. See individual program listings for additional requirements.

First Day / Full Moon Hike. Thursday, October 1, 6:30 p.m. Come explore the park by the light of a full moon. Bring a snack to share around a campfire afterwards and a flashlight. **\$5; \$15/family; members, free.**

How Do Deer Affect the Forest? Cornell Project at Salt Springs. Saturday, October 10, 10 a.m. **Kristi Sullivan** will introduce a new project at Salt Springs to study deer browse. **Meet at the Friends Parking Lot on Buckley Road; we'll talk and walk from there. Free-will donation.**

The Five Elements—Metal. Sunday, October 25, 1 p.m. According to Chinese philosophy, the five elements of Wood, Fire, Earth, Metal, and Water are believed to be the fundamental elements of everything in the universe. In this outdoor workshop, **Tami Noonan** explores the element Earth, which is associated with autumn. **Free-will donation.**

Halloween Fest. Saturday, October 31, 4 p.m. Our popular fall family event is back, with lots of pumpkins, activities, and food. We begin with pumpkin carving and end with ghost stories around a campfire. **\$5; families, \$20; members, 50% discount.**

First Day / Full Moon Hike. Sunday, November 1, 6:30 p.m. Bring a snack to share around a campfire afterwards and a flashlight. **\$5; families, \$15; members, free.**

Star Party. Saturday, November 14, 6:30 p.m. We'll meet at the Wheaton House, where amateur astronomers **Mike and Mary Sinkovich** will share some tips about telescopes, and then we'll head to a field up the road where star-gazing is ideal. Dress for the weather. **\$5; families, \$15; members, free.**

Holiday Centerpiece and Nature Crafts. Sundays, November 15 and December 13, 1 p.m. We'll gather materials and make some holiday decorations. All activities are outside, so dress for the weather. **\$5; members, free.**

First Day Hike—End Game. Tuesday, December 1, time TBA. Bring a snack to share around a campfire afterwards and a flashlight. **\$5; families, \$15; members, free.**